

Local Plan Review-Housing development Blackhalve Lane/Linthouse Lane/Kitchen Lane

Can I begin by saying that when I mentioned to people, I had a meeting about the vast number of new houses planned to be built, people didn't realize what the Local Plan Review communication they had seen meant? The details on this housing development are hidden deep within a huge document. Everyone is shocked and unaware about this development. The feedback you are currently getting is not representative of what the feeling will be when the plans become more apparent.

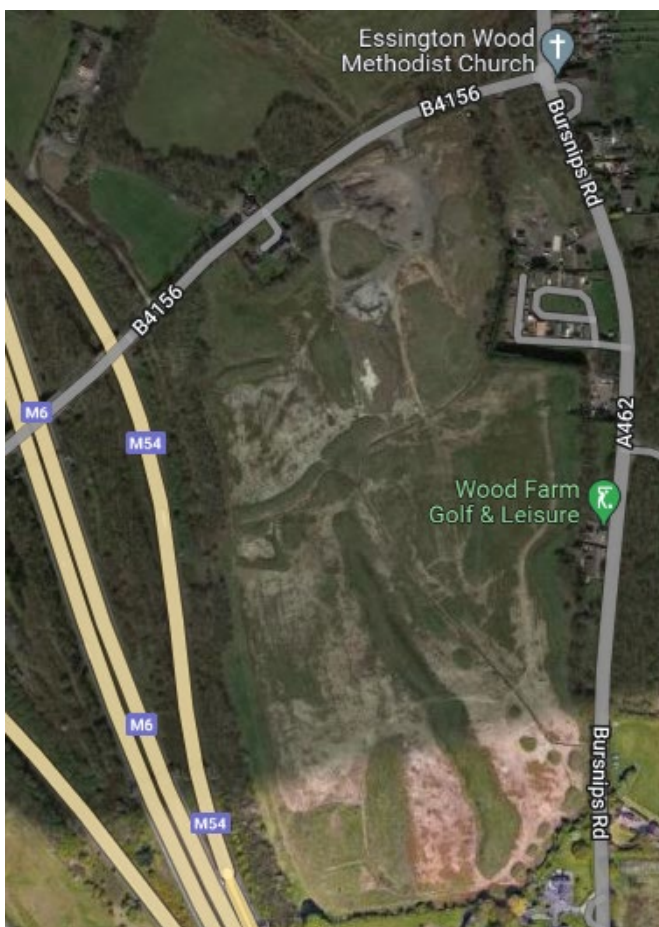
Background- Resident of Essington 58 Years. On committee for Friends of Essington.

Why Essington (Area)- Not a NIMBY but had continual development around the village of Essington, with the Steadings housing estate currently ongoing. Also, Quarries, and in the past M54, Open cast mining, M6 etc. Surely Essington has had enough new housing developments over the years to cover the population growth.

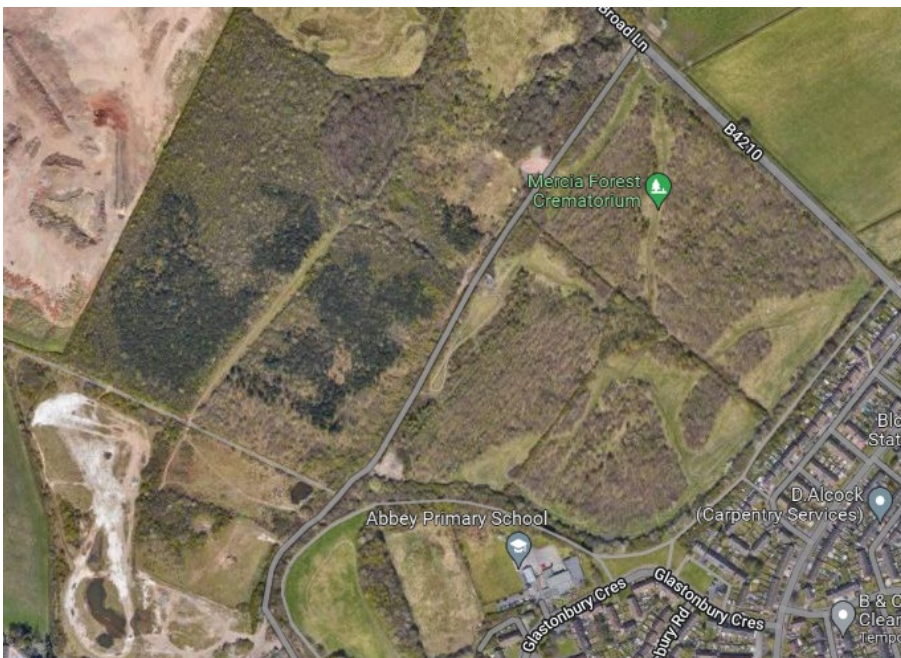
Why Greenbelt land- Which has been rich farming land forever.

There is still Brown belt area in Essington which is an eyesore.

- Disused tile factory land in between Hobnock and Bursnips Road. Apparently, this is earmarked for something else but has been in its current state for years and years.



- Also waste land behind the new Mercia Forest Crematorium.



Is there an assurance that no more huge housing estates will be built if this goes ahead?

Maintain Separation- It would be a disaster for the village if the houses reach the edge of Blackhalve Lane/High Hill. This will simply blend the old mining village into the built-up City area.

Not Naïve enough to think we can stop this, so we need to discuss mitigation.

Construction Traffic- Need to protect the village from all the traffic during building. There is already an unreasonable amount of construction traffic (mainly tipper lorries relating to the Wood Farm Golf Landfill and surrounding quarries) so any increase will increase the chance of a serious accident.

We have had limited success in raising these issues with the council (in fact county and district councils have kept claiming the other council is responsible!) so can a residents meeting be held regularly to discuss issues if the development goes ahead.

Improve Infrastructure- The access to highways is shown as a plus for this location. As a result, it is obvious that all traffic going to M6 will cut through the village. There are several choke points which need remedies to prevent serious injuries and deaths. In particular by St Johns School along Hobnock Road. This has already been highlighted to the council but no action has been taken.



Also be good if a footpath could finally be created in Blackhalve Lane. Lives have already been lost so increased traffic will only increase these sad incidents.

Tree Preservation-Farmers have always worked around trees so it would be a disgrace if they were removed for housing.

St Johns School- Highly regarded school already at capacity. Will the new development be self-sufficient for school needs? If any further cars deliver pupils to the school, then a serious accident is very likely.